

# Software Upgrade Guide

Before upgrading, please make sure that **PME390S.UPD** file has been stored in SD Card. Storing the file into SD Card can be done with *SD Card reader* connected to computer unit or using PME-390 as *SD Card reader*.

## ***I. Unzip software upgrade file***

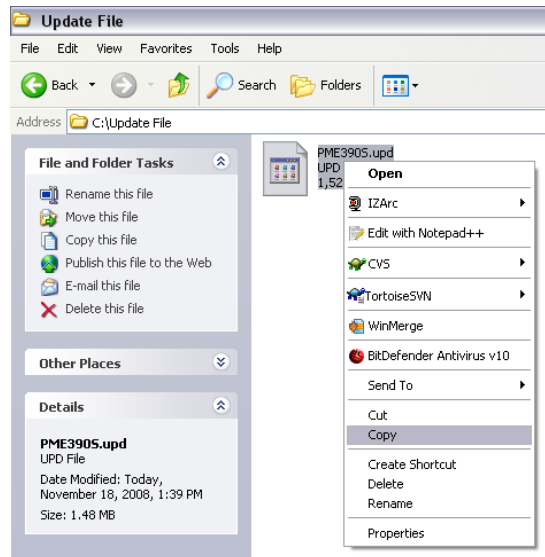
1. Download the .zip file
2. Unzip the .zip file to c:\Update File  
Enter the folder until you see "PME390S.upd" file

## ***II. Using PME-390 as connector reader.***

1. Insert SD Card into PME-390 SD-Card slot.
2. Turn on the unit
3. Using USB-Connector, connect PME-390 unit to computer. When computer successfully read the SD-Card, this window will appears\*



4. Choose the "Open folder" option and click ok to read contain of SD Card.
5. Copies the **PME390S.UPD** file into SD Card by:
  - dragging it to SD Card window, or
  - right-click on the **PME390S.UPD** file and click *copy*

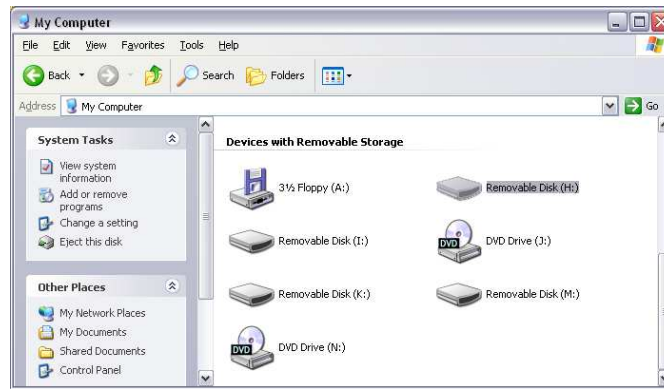


Then, in any empty spaces in Removable Disk windows, right-click the mouse and click *Paste*



6. Plugged out the USB connector from PME-390 and the unit will re-start automatically

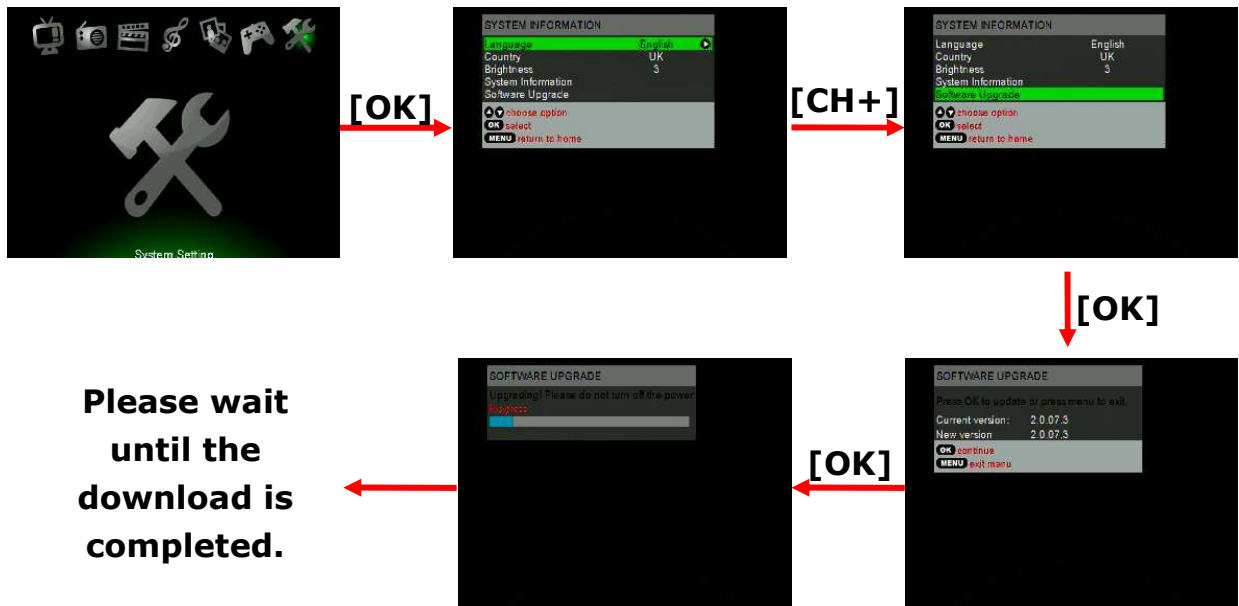
\* If this wizard doesn't appear, open the SD Card manually through "My Computer". When computer successfully read SD Card, a Removable Disk icon will appears. Click on the icon to open.



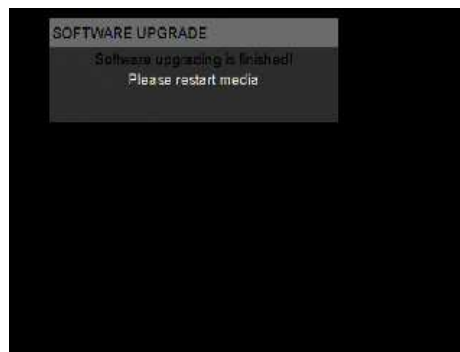
### ***III. Software Upgrading***

1. Ensure SD-Card containing **PME390S.UPD** file is inserted into PME-390 SD-Card slot.\*\*
2. Plugged the adaptor into unit

### 3. Select *System Setting* in Home and follow these steps



Download is completed when you see this screen



\*\* If SD-Card is read by the media an icon will appears beside the battery indication



**SD-Card  
indicator icon**